

The Wallace Collection - 2020 Exhibitions Announcement:

Rubens: Reuniting the Great Landscapes

20 May 2020 - 13 September 2020

Free Admission

#ReunitingRubens

In partnership with VISIT**FLANDERS**

For the first time in over two hundred years, Peter Paul Rubens's (1577-1640) two great masterpieces of landscape painting, *The Rainbow Landscape* (The Wallace Collection) and *A View of Het Steen in the Early Morning* (The National Gallery) will be reunited as part of an exhibition at the Wallace Collection. Although kept together in Rubens's own collection, the paintings were brought to London in 1803, and separated for good with *The Rainbow Landscape* eventually entering the Wallace Collection and *A View of Het Steen in the Early Morning*, the National Gallery collection.

Painted as a companion pair, these sweeping panoramic works show Rubens's newly acquired manor house and estate, Het Steen, at Elewijt (between Brussels and Antwerp) as it was in about 1636. They both celebrate the fertile countryside of Brabant, and pay homage to the great Flemish tradition of landscape painting. The exhibition will explore these paintings as the culmination of Rubens's practice as a landscape painter, offering new insights into how they were developed as compositions through new technical imaging and photography, together with a newly commissioned documentary exploring Rubens's work.

Faithful and Fearless: Portraits of Dogs

14 October 2020 - 21 February 2021

Tickets on sale spring 2020

Admission Charge

#PortraitsofDogs

In October 2020, the Wallace Collection presents *Faithful and Fearless: Portraits of Dogs*. Curated by Dr Xavier Bray, Director of the Wallace Collection, the exhibition will trace the evolution of the representation of dogs, from antiquity to the 21st century.

For the first time in a UK exhibition, it will focus uniquely and solely on the portrayal of dogs, with no human beings featuring in any of the portraits or objects. The exhibition will feature around 50 works, from small-scale sculpture to life-size paintings, drawings and photographs, this new exhibition will feature works by renowned British artists including Thomas Gainsborough and Edwin Landseer, alongside French painter Rosa Bonheur. *Faithful and Fearless* draws from UK public collections and is complemented by a selection of the Wallace Collection's own internationally renowned works.

ENDS

Notes to Editors

For further press information please contact Kathryn Havelock or Billy Ward on press@wallacecollection.org / 0207 563 9516 / 0207 563 9567

Tickets

Tickets for *Faithful and Fearless: Portraits of Dogs* will be on sale from the Wallace Collection website in spring 2020.

www.wallacecollection.org

Membership

Members of the Wallace Collection enjoy free unlimited entry to all Wallace Collection exhibitions, as well as exclusive previews, private views and special events, plus discounts in the Wallace Collection Shop and Restaurant. For further information please visit:

www.wallacecollection.org/support-us/become-a-member/

Opening hours

Open daily 10am-5pm.

Social Media

Instagram: [@wallacemuseum](https://www.instagram.com/wallacemuseum)

Facebook: [@wallacecollection](https://www.facebook.com/wallacecollection)

Twitter: [@WallaceMuseum](https://twitter.com/WallaceMuseum)

Events

A series of events including lectures, seminars, art classes and performances will take place in relation to these exhibitions. Find out more: wallacecollection.org/whats-on

About the Wallace Collection

The Wallace Collection is one of the most significant collections of fine and decorative arts in the world and the greatest bequest of art ever left to the British Nation. The collection encompasses old master oil paintings from the 14th to the late 19th-century including works by Titian, Velazquez, Rubens and Van Dyck, princely arms and armour, and one of the finest collections of French 18th-century art in all media.

www.wallacecollection.org

Image Sheet

Rubens: Reuniting the Great Landscapes

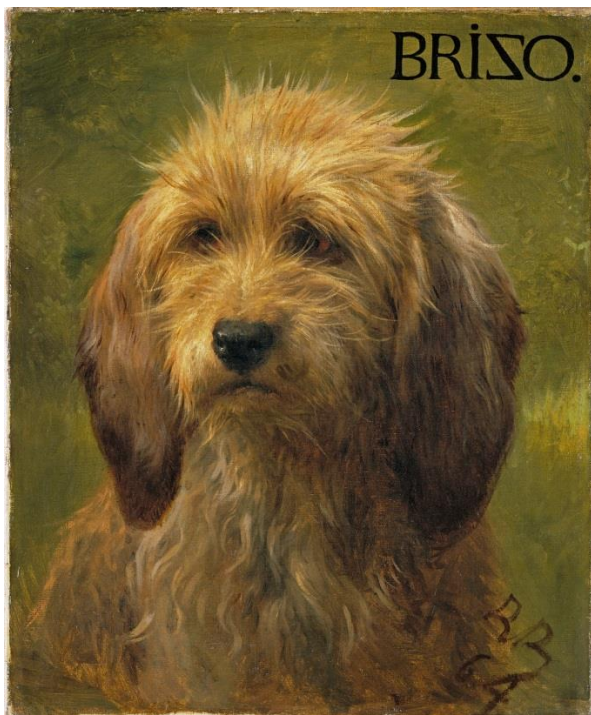
18 May 2020 – 13 September 2020



Peter Paul Rubens, *The Rainbow Landscape*, c. 1636 © The Wallace Collection, London.

Faithful and Fearless: Portraits of Dogs

14 October 2020 – 21 February 2021



Rosa Bonheur, *Brizo, A Shepherd's Dog*, 1864 © The Wallace Collection, London.